



GUTEX Thermowall-L

TECHNICAL DATA SHEET



GUTEX Thermowall-L is the light plaster baseboard with excellent insulation performance – ideal for full-surface mineral or solid wood substrates in the ecological Thermowall ETICS.

Ingredients

- Untreated fir and spruce
- 4.0 % PUR resin
- 1.5 % paraffin

Disposal

- Waste code numbers as per AVV
030105, 170201

Bulk density ρ [kg/m ³]	~ 110
Nominal thermal conductivity λ_D [W/mK]	0.038
Vapour diffusion μ	3
Compressive stress/strength [kPa]	≥ 50
Tensile strength perpendicular to the surface [kPa]	≥ 7.5
Short-term water absorption [kg/m ²]	≤ 1
Air flow resistivity [kPa s/m ²]	≥ 100
Specific heat capacity [J/kgK]	2100
Maximum working temperature [°C]	110
Fire reaction Euro Class as per EN 13501-1	E
Product standard	EN 13171
Board designation	WF-EN13171-T5-WS1,0-DS(70,-)3-CS(10/Y)50-TR7,5-MU3-AF,100





GUTEX Thermowall-L

Detailed information

Joint type	Flush-mount				
Thickness [mm]	120	140	160	180	200
Length × width [mm × mm]	1250 × 590				
m ² /Piece(s)	0.73				
Weight per board [kg]	9.70	11.40	13.00	14.60	16.20
Weight per m ² [kg]	13.20	15.40	17.60	19.80	22.00
Piece(s)/Pallet	36	32	28	24	22
Square metres per pallet [m ²]	26.55	23.60	20.65	17.70	16.22
Weight per pallet [kg]	390				
Nominal thermal resistance R _D [m ² K/W]	3.15	3.65	4.20	4.70	5.25
sd value [m]	0.36	0.42	0.48	0.54	0.60



GUTEX Thermowall-L

PRODUCT INFORMATION

Areas of use

- Plaster baseboard for Thermowall ETICS for wood and solid construction without rear ventilation

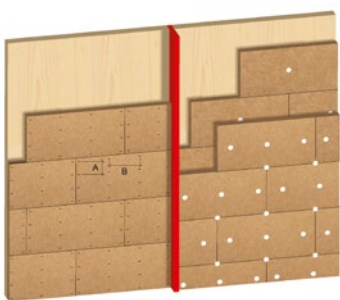
Advantages

- Shockproof
- Improvement of sound insulation
- High dimensional accuracy for time-saving and simple installation
- Single-layer, homogeneous bulk density profile
- Optimum thermal insulation
- Outstanding heat storage capacity → good protection from heat in summer and cold in winter
- Moisture-regulating
- Vapour-permeable
- Wood as the sustainable raw material → recyclable
- Manufactured in Germany (Black Forest)
- Ecologically safe (natureplus® certified)

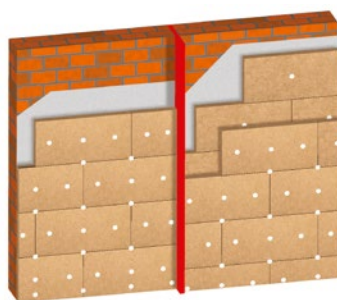
Installation instructions

- For full, detailed instructions on board installation, fastenings, and render application, see the brochure 'Thermowall ETICS, the ecological thermal insulation system'.
- Note the legal requirements for handling wood dust

Assembly over Timber or Masonry



Over Timber Wall



Over Masonry

